

Figure 25. Sedimentation-rate curve for Hole 706A.

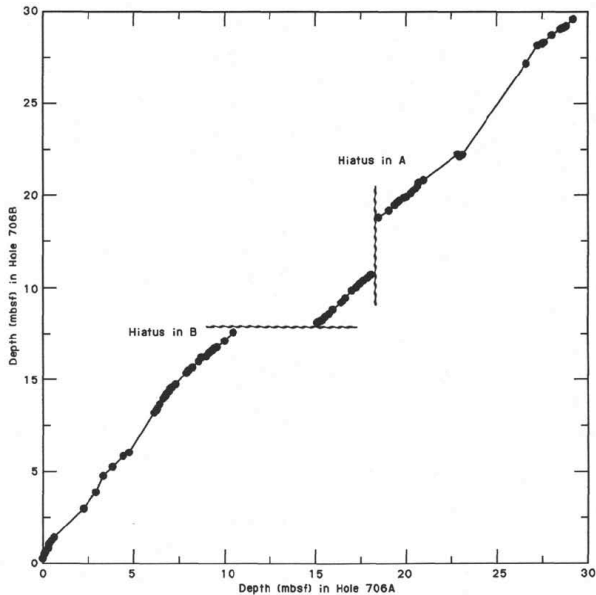


Figure 23. Shaw correlation diagram showing the relationship between the lithostratigraphic records of Holes 706A and 706B, based on whole-core magnetic susceptibility profiles of each hole.

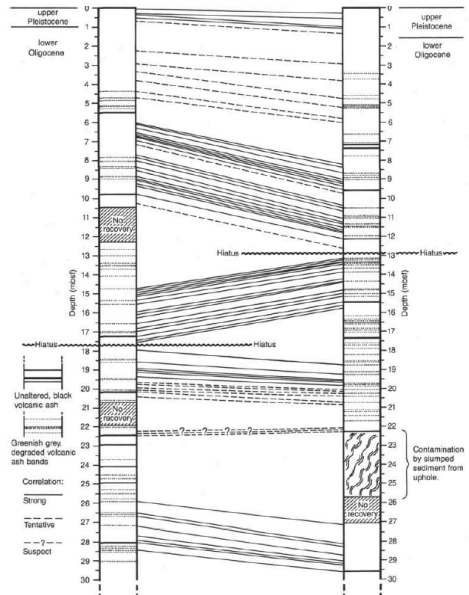


Figure 22. "Fence" diagram showing the correlation between Holes 706A (left) and 706B (right) based on whole-core magnetic susceptibility profiles. This figure also shows the position of unaltered and degraded volcanic-ash-rich horizons in each sequence, taken from core description data.