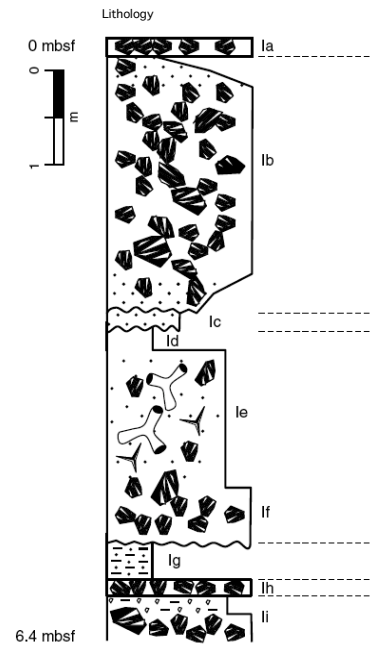
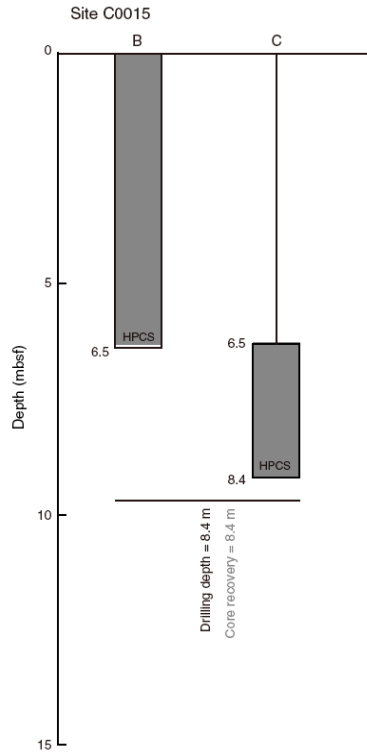


**Figure F12.** Schematic illustration of drilling and coring systems used, drilling and core recovery depths, and brief remarks on drilling operations and specific features of core recovered from Site C0015.



**Hole C0015B**

- la) Clast-supported coarse-grained angular woody pumice gravel
- lb) Inverse to normally graded clast-supported coarse-grained angular woody pumice gravel
- lc) Unconsolidated medium-grained, well-sorted foraminiferal sand
- ld) Silty foraminiferal sand
- le) Matrix-supported bioclastic gravel with 20% coral fragment and rare clasts of woody pumice in a poorly sorted mud to coarse quartz sand matrix
- lf) Subrounded woody pumice gravel
- lg) Mud with pumiceous silt laminae
- lh) Clast-supported coarse-grained angular woody pumice gravel
- li) Pumiceous grit grading to gravel at base

**Hole C0015C**

- lj) Unconsolidated medium-grained, well-sorted, well-rounded quartz sand
- lk) Clast-supported coarse-grained angular woody pumice gravel
- ll) Unconsolidated medium-grained, well-sorted, well-rounded quartz sand—highly disrupted by drilling
- lm) Well-sorted quartz-pumice grit
- ln) Clast-supported coarse-grained angular pumice gravel

