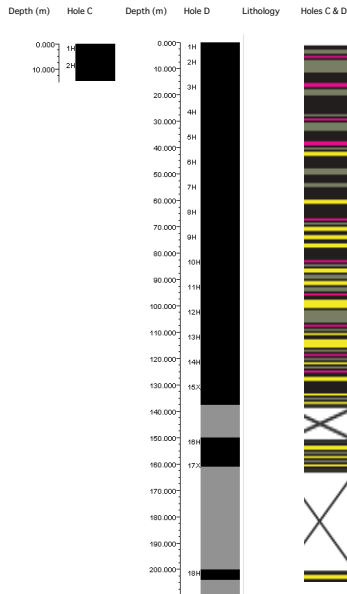
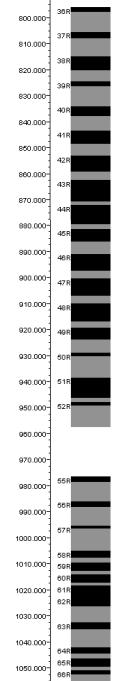


Core recovered (black square)  
 No recovery of core (gray square)



**Lith. unit**  
**Unit I:**  
*Upper forearc basin (Quaternary)*  
 Hemipelagic mud, fine sand, silt, and volcanic ash

Silty clay (gray square)  
 Volcanic ash (black square)  
 Sand (yellow square)  
 Silt (dark gray square)

